

ECO.32-T

Magnetic drilling machine

EUROBOOR

FOR PROFESSIONALS BY PROFESSIONALS

Technical data

	Metric	Imperial
Annular cutting	Ø 12 - 32 mm	Ø 1/2" - 1 1/4"
Twist drilling	Ø 1 - 13 mm	Ø 1/16" - 1/2"
Countersinking	Ø 10 - 40 mm	Ø 3/8" - 1 9/16"
Tapping	Ø M3 - M12	Ø 1/8" - 1/2"
<hr/>		
Length	320 mm	12 5/8"
Width	210 mm	8 1/4"
Height	370 - 512 mm	14 9/16" - 20 3/16"
<hr/>		
Stroke	150 mm	5 15/16"
Weight*	11 kg	24.3 lbs
Magnet (l x w x h)	160 x 80 x 42 mm	6 5/16" x 3 1/8" x 1 5/8"
Magnetic force	1,500 kg	3,305 lbs
Motor power	1,000 W	9.1 A
Total power	1,050 W	9.5 A
<hr/>		
Speed	150 - 600 rpm	
(no load)		
Speed	225 rpm	
(load 1,000 W, 9.1 A)		
Spindle (Weldon)	19.05 mm	3/4"
<hr/>		
Voltage	110 - 120 V / 60 Hz	
	220 - 240 V / 50 - 60 Hz	

* Without power cord and handles

Features



Adjustable speed



R/L rotation



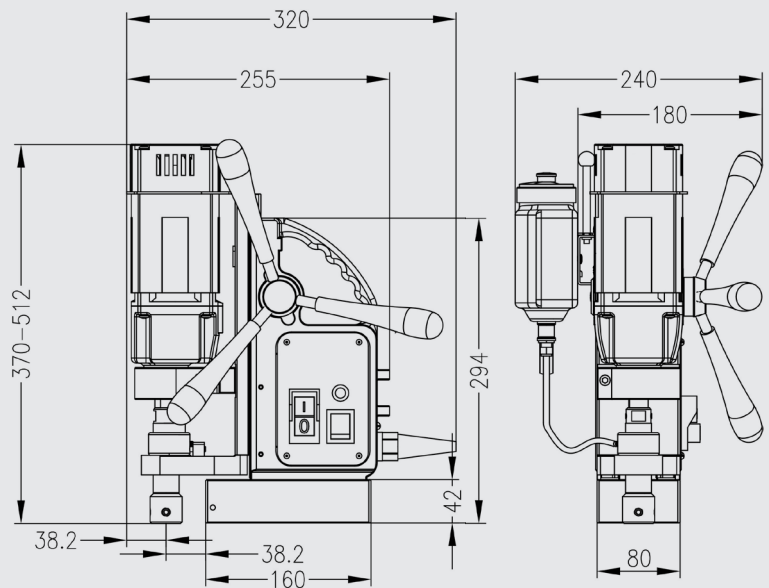
Magnet LED-indicator (SensorTec)



2-way magnet (TempTec)



Tapping



Euroboor makes every effort to meet quality and integrity requirements. That is why we as an organization are proud of the recognition of some leading organizations worldwide:



www.euroboor.com